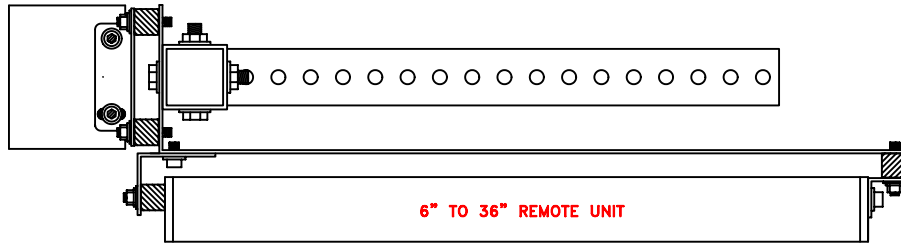


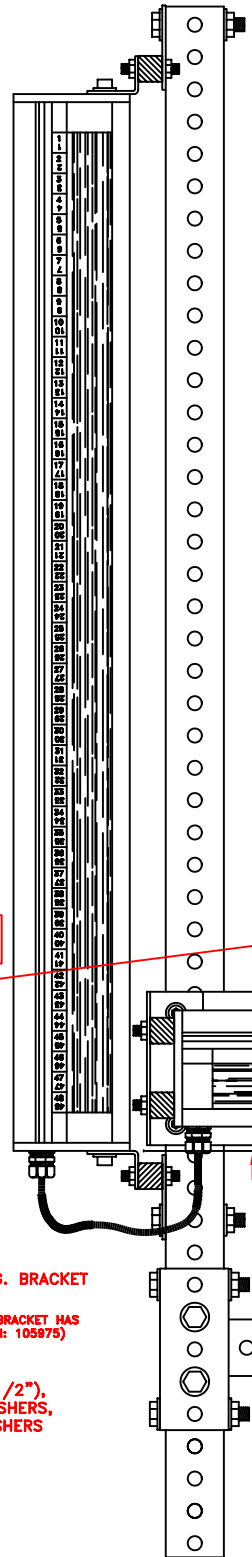
1 ASSEMBLY (5 PCS) FOR EACH TRANSMITTER/RECEIVER SET

ASSEMBLY P/N	REMOTE UNIT
900398	6"
900399	9"
900400	12"
900401	15"
900402	18"
900403	21"
900404	24"
900438	27"
900439	30"
900440	33"
900441	36"



TOP VIEW

6" TO 36" REMOTE UNIT



ALL NUTS, BOLTS, WASHERS, IN HARDWARE KIT  
LINK P/N: 106637 (28 PCS \*)

DESCRIPTION	QTY	LINK P/N:
BOLTS (HEX 3/8-16 X 3)	4	106227
WASHERS (3/8 FLAT)	8	103311
NUTS (NYLOCK 3/8-16)	4	102249
SCREW (BH 1/4-20 X 1/2)	4	101944
WASHER LOCK INT 1/4	4	10121
WASHERS (1/4 FLAT)	4	101620
* PLUS PARTS FROM STANDARD REMOTE KIT.		

REMOTE MTG. BRACKET LENGTH	LINK P/N
6"	106624
9"	106625
12"	106626
15"	106627
18"	106628
21"	106629
24"	105974
27"	107327
30"	107328
33"	107329
36"	107330

**WARNING!!**

The Link Lite Black Max must be installed so that the distance between its sensing field and the nearest point of operation hazard is greater than or equal to the minimum safety distance which must be calculated by a formula specified by OSHA and ANSI. See latest editions OSHA 1910.217, ANSI B11.1 and B11.9.

3/8 BOLTS X 3",  
3/8 FLAT WASHERS,  
3/8 NYLOCK NUTS

OPERATOR SIDE VIEW OF  
REMOTE UNIT

USE THE MTG BRACKET ('A' OR 'B')  
THAT WILL MATCH THE SLOT ON  
THE FRONT MTG BRACKET  
'A' P/N: 105797 (SHOWN)  
'B' P/N: 105798  
THESE SLOTS SHOULD MATCH

PRESS SIDE VIEW OF  
REMOTE UNIT

LEFT SIDE MTG. BRACKET  
P/N: 105977

(RIGHT SIDE MTG. BRACKET HAS  
REVERSE BEND P/N: 105975)

SCREWS (BH 1/2"),  
1/4 LOCK WASHERS,  
1/4 FLAT WASHERS

DO NOT MOUNT REMOTE EXTENSION  
BELOW THIS POINT



**LINK SYSTEMS**

LINK ELECTRIC & SAFETY CONTROL CO.  
444 McNally Dr. • Nashville, TN. 37211

NO	DESCRIPTION	DATE	BY
1	ADDED 27,30,33,36" LENGTHS	1-15-98	JCN

REVISIONS

This drawing and/or technical information is the property of LINK ELECTRIC & SAFETY CONTROL CO. This is submitted in confidence and is not to be reproduced for others without LINK's prior written consent.

LINK LITE BLACK MAX MTG BRACKET ASSEMBLY FOR 6" - 36" REMOTE UNIT DRAWING P/N: 106636		SCALE DWG PRINT 1=1 1=3	DATE 6-17-96	CODE IDENT NO 305
DWN BY JCN	CHK BY	DRAWING NUMBER C-305-1132		